

CARING FOR EVERY DROP



We care for every drop because we know you do.

As a bioprocessor who is advancing the human condition, caring for every drop requires maximum reliability and exceptional protection of media integrity. At PSG® Biotech, we share your vision for innovation and transforming lives.

Our comprehensive portfolio of specialty flow control solutions includes pumps, sensors and flow meters that safely transfer and precisely meter the most delicate of biologics, medicines and therapeutics, all while increasing yield, throughput and speed to market. With so many best-in-class solutions under one roof, you can rely on an industry-leading partner to provide you with the innovation you need for optimum results. From laboratory to commercial scale, we care for every drop.

Introducing PSG Biotech.



Pumps, Sensors & Flow Meters

LABORATORY

- Lab Scale/Process Development
- Cell & Gene Therapy

UPSTREAM

- Buffer & Media Preparation
- Sterile Filtration
- Bioreactor/Fermentation
- Perfusion
- Centrifugation

DOWNSTREAM

- Microfiltration
- Depth Filtration
- Chromatography
- Tangential Flow Filtration (TFF)
- Virus Filtration
- Inline Buffer Formulation
- Bulk Fluid Transfer
- Virus Inactivation & pH Adjustment

FINISHING

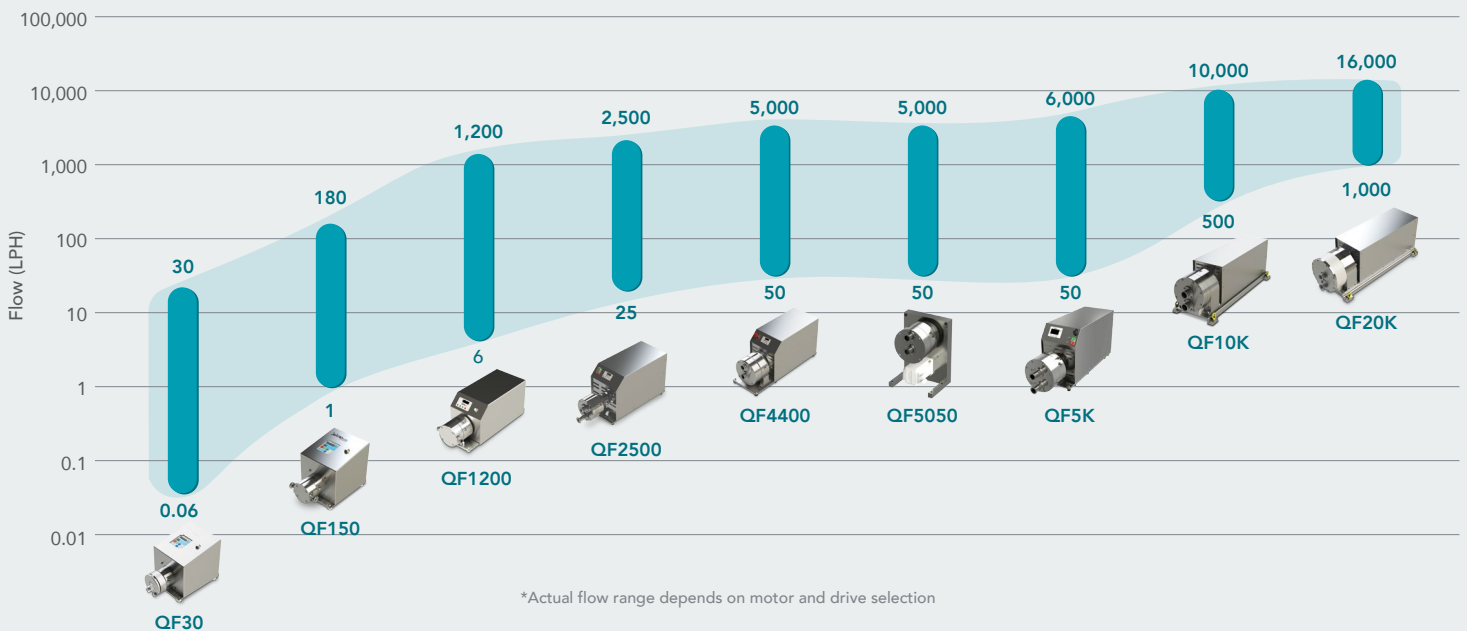
- Formulation
- Final Filtration
- Filling

PUMPS

Quattroflow® single- and multiple-use four-piston diaphragm pumps meet all the operational requirements necessary to ensure the safe, cost-effective, efficient and reliable transfer of biological materials. This technology is clean-in-place (CIP) and sterilize-in-place (SIP) capable and includes disposable solutions that increase flexibility, reduce downtime, eliminate the costs associated with cleaning validation and decrease cross-contamination risks.

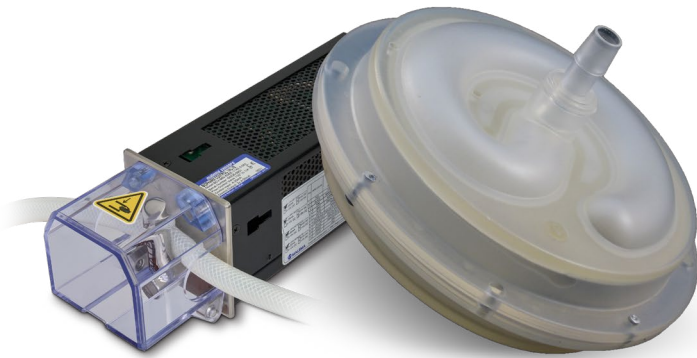


High-Performance Pumps Flow Rate Range*



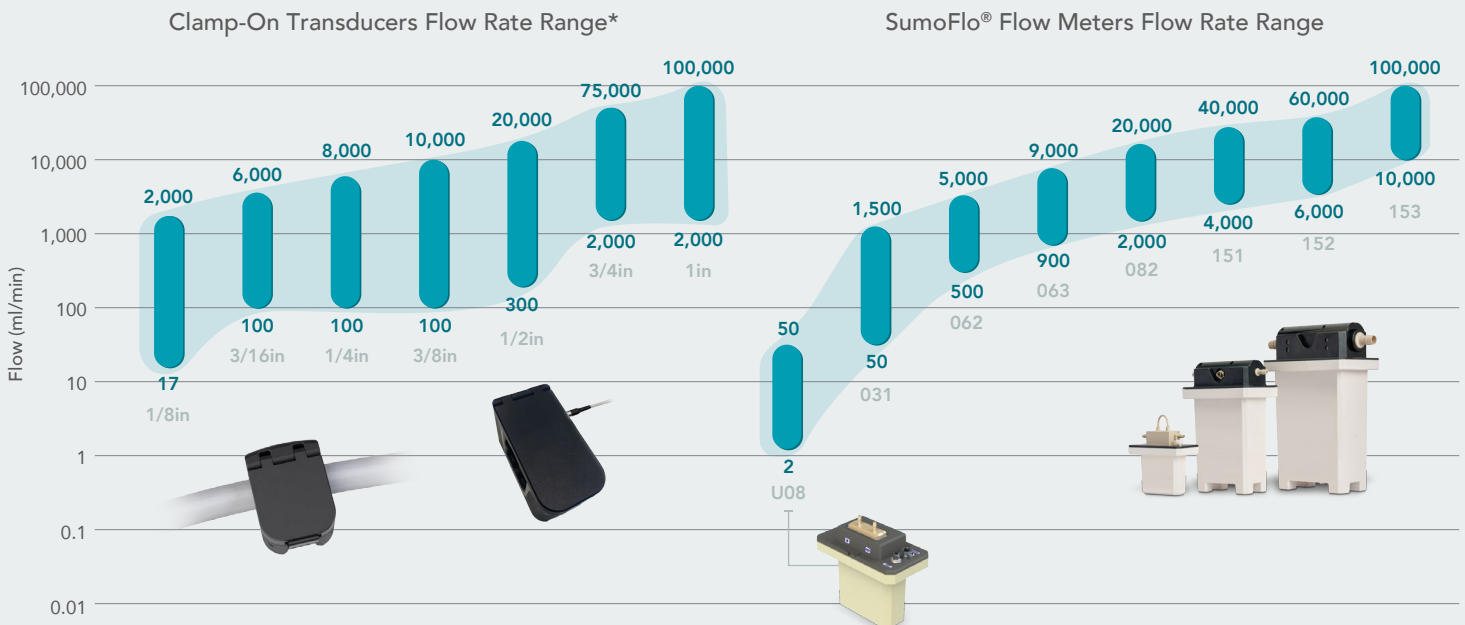
SENSORS & FLOW METERS

Whether for use in upstream or downstream applications on a laboratory or industrial scale, the BioProTT™ and SumoFlo® product ranges of flow-measurement solutions of sensors, electronics and process instrumentation provide optimum additions to your applications. Includes contact-free, inline ultrasonic and Coriolis flow-measurement systems and innovations for single-use biopharmaceutical manufacturing techniques.



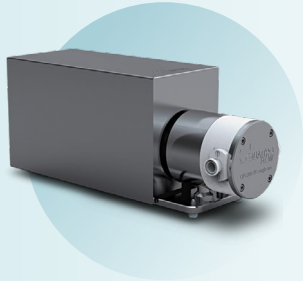
FLOW CONTROL COMPONENTS

As the leading manufacturer of high-precision flow meters, PSG Biotech has developed a range of solutions, including control valves and pulsation dampeners, that deliver superior flow measurement and accuracy while improving manufacturing techniques in various bioprocessing applications, including chromatography, tangential flow filtration (TFF) and bulk fluid transfer.



*The minimal and maximal flow range is limited by the tube material and inner diameter. This may lead to higher or lower possible Qmin and Qmax and shall be examined on a case-by-case bases by test field.

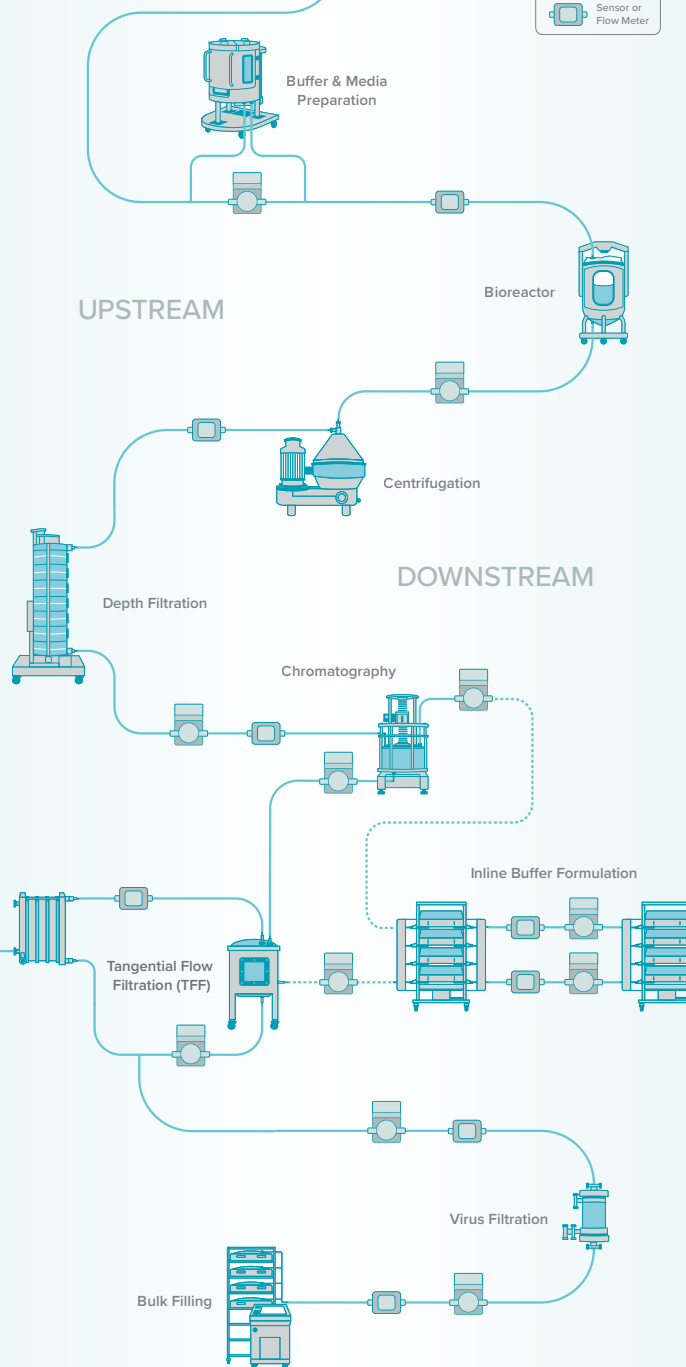
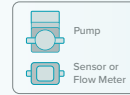
Specialty Flow Solutions for Every Process Step



PSG Biotech offers Quattroflow single- and multiple-use four-piston diaphragm pumps for use in critical biopharmaceutical process-development and small-scale applications.



PSG Biotech offers a range of single- and multi-use flow-measurement sensors that achieve and maintain the highest levels of safety, quality and reliability. Our portfolio includes clamp-on sensors, Ultrasonic and Coriolis technologies, with up to +/- 1% accuracy to meet a variety of biopharma processing needs.



Q-Control is an integrated pump controller for Quattroflow pumps and interfaces with a variety of flow and pressure sensors providing automated control over pump operations.